

S-5-TH™ Installation Instructions

Providing *The Right Way*™ to attach virtually anything to metal roofs worldwide.

S-5!®
The Right Way

ATTENTION! This document is a guide only. This product may not be suitable for every application. The user is responsible for all necessary application engineering and design. Please scan the QR code to the right for additional information, warnings and disclaimers regarding product use.

You can also view load test results at www.S-5.com where applicable, or contact your S-5!® distributor for more information.



Included in the Box [Based on One Part]

1 S-5-TH Clamp

1 M8 Bolt
(30 mm/T30 Torx drive)

Minor Box Qty: 70 | Master Box Qty: 210

Tools Required

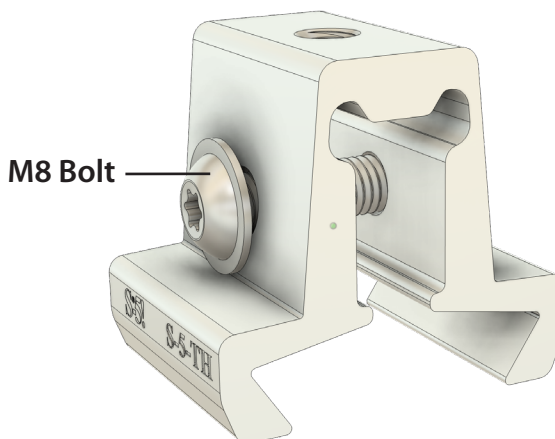
☐ Screw Gun

☒ T30 Torx Bit Tip [PROVIDED]

☐ Dial Indicating
Torque Wrench

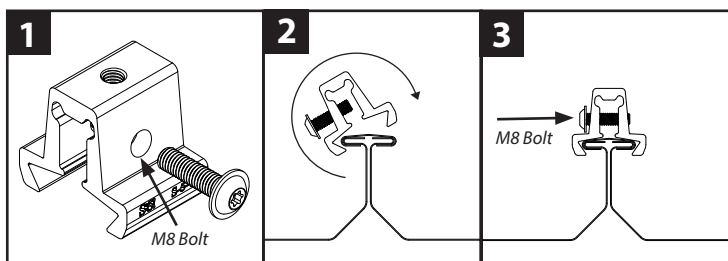
**For accurate tension values, do
NOT use a clicking torque wrench.*

S-5-TH Clamp

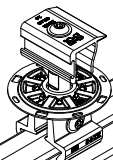


How To Install S-5-TH

IMPORTANT: Determine the location of your first row of clamps. To ensure a straight line, install a single S-5-TH on each end of the roof at a measured, consistent distance from the eave or ridge of the roof. Use a string line between the two clamps as a guide to ensure the remaining S-5-TH clamps create a straight row.



- 1 Begin by partially threading the provided M8 bolt into the clamp by hand.
- 2 Install by holding the clamp under the edge of the seam, then roll the clamp into position over the seam.
- 3 Tighten the M8 bolt to 160-180 inch-pounds (18-20 N*m).



PRO TIP

PVKIT® (sold separately) can be preassembled with the S-5-TH prior to clamp installation, and a knuckle drive can be used to help reach the bolt when necessary.

Note: The disk nodes must be facing up to engage the module frame. This can be preassembled prior to clamp installation.

Note: Any S-5! warranty and/or calculation may be void if hardware is used that has not been furnished by S-5! directly or through one of its licensed distributors, or if an assembly has not been tested by S-5! These instructions are for use by those experienced in the trade. Always follow appropriate safety precautions and use appropriate tools.

S-5!® Warning! Please use product responsibly!

S-5!® Warning! Please use this product responsibly! Products are protected by multiple U.S. and foreign patents. For published data regarding holding strength, fastener torque, patents and trademarks, visit www.s-5.com. Copyright 2025, Metal Roof Innovations, Ltd. S-5! products are patent protected. S-5! aggressively protects its patents, trademarks and copyrights. 101525